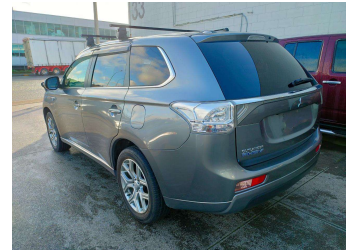
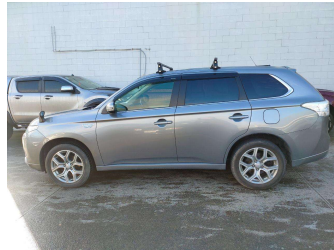
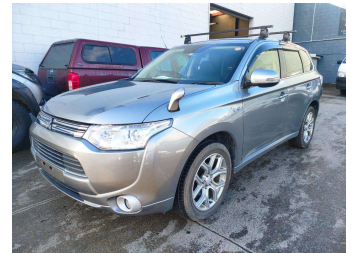
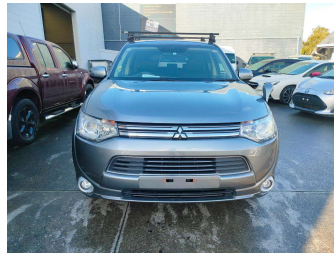



# 2014 Mitsubishi Outlander PHEV



**Purchase Price** **\$20,250**

Includes GST  
Excludes on-road costs of \$569.25

Finance may be available on this vehicle. Ask one of our friendly staff for more information.



Gain peace of mind with Mechanical Breakdown Insurance. **Ask us how.**



**Top features**

None Listed

Body Style  
**RV-SUV**

Odometer  
**114,799 km**

Engine  
**1998 cc, Plug-In Hybrid**

Fuel Type  
**Hybrid**


Transmission  
**Auto**

Wheels  
-

VIN  
**7AT0CJ3MX23011376**

Interior  
-

Safety



Based on 2024 UCSR rating for 12-21 models

Reg No.  
-

Ext Colour  
**silver**

History  
-

Seats  
-

CO2 Emissions  
**★★★★☆**  
**64 grams/km**


Energy Economy  
**★★★★☆**  
**Annual fuel cost not available**  
**2.7L per 100km**

Actual figures and cost per year will vary based on proportion of hybrid mode driving and battery charging schedule. Emissions and Energy Economy figures standardised to 3P WLTP.

**Stock ID: 2551372**



A2Z Cars | Phone 0800 A2Z CAR | Email paulmadan@gmail.com  
33 Neilson Street, Onehunga, Auckland 1061, New Zealand  
www.a2zcars.co.nz



★★★★★  
4.52 | 968 reviews