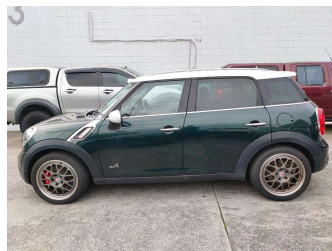
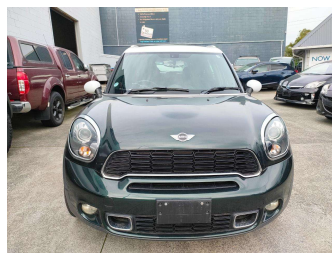



# 2013 Mini Cooper



**Purchase Price** **\$11,995**

Includes GST  
Excludes on-road costs of \$569.25

Finance may be available on this vehicle. Ask one of our friendly staff for more information.



Gain peace of mind with Mechanical Breakdown Insurance. **Ask us how.**



**Top features**

None Listed

Body Style  
**Hatchback**

Odometer  
**117,249 km**

Engine  
**1995 cc**


Fuel Type  
**Petrol**

Transmission  
**Auto**

Wheels  
-

VIN  
**WMWZC52090WP81944**

Interior  
-

Safety  
  
Based on 2023 VSRR rating

Reg No.  
-

Ext Colour  
**Green**

History  
-

Seats  
-

CO2 Emissions  
**★ ★ ★ ★ ☆ ☆**  
**209 grams/km**


Energy Economy  
**★ ☆ ☆ ☆ ☆ ☆**  
**Annual fuel cost of \$3,530**  
**9L per 100km**

Cost per year is an estimate based on petrol price of \$2.80 per litre and an average distance of 14000 km. Emissions and Energy Economy figures standardised to 3P WLTP.

**Stock ID: 2551407**



A2Z Cars | Phone 0800 A2Z CAR | Email paulmadan@gmail.com  
33 Neilson Street, Onehunga, Auckland 1061, New Zealand  
www.a2zcars.co.nz



★★★★★  
4.52 | 954 reviews