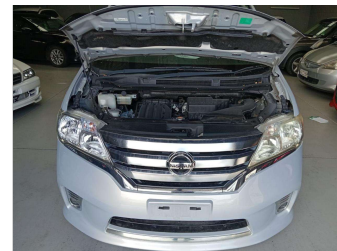
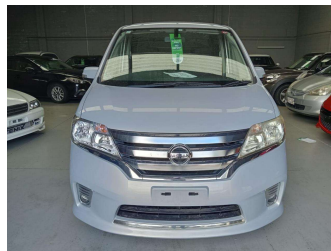


2013 Nissan Serena Hybrid



Purchase Price **\$9,999**

Includes GST
Excludes on-road costs of \$569.25

Finance may be available on this vehicle. Ask one of our friendly staff for more information.



Gain peace of mind with Mechanical Breakdown Insurance. **Ask us how.**



Top features

None Listed

Body Style
Station Wagon

Odometer
118,699 km

Engine
1990 cc


Fuel Type
Hybrid

Transmission
Auto

Wheels
-

VIN
7AT0DH3FX24109668

Interior
-

Safety

Based on 2023 VSRR rating

Reg No.
-

Ext Colour
silver

History
-

Seats
-

CO2 Emissions
★★★★☆
171 grams/km


Energy Economy
★★★☆☆
Annual fuel cost of \$2,860
7.3L per 100km

Cost per year is an estimate based on petrol price of \$2.80 per litre and an average distance of 14000 km. Emissions and Energy Economy figures standardised to 3P WLTP.

Stock ID: 2551894



A2Z Cars | Phone 0800 A2Z CAR | Email paulmadan@gmail.com
33 Neilson Street, Onehunga, Auckland 1061, New Zealand
www.a2zcars.co.nz



★★★★★
4.52 | 953 reviews