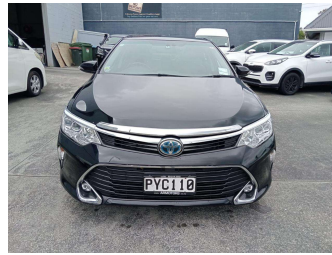


2016 Toyota Camry



Purchase Price **\$14,499**

Includes GST
Excludes on-road costs of \$287.5

Finance may be available on this vehicle. Ask one of our friendly staff for more information.



Gain peace of mind with Mechanical Breakdown Insurance. **Ask us how.**



Top features

None Listed

Body Style
Sedan

Odometer
110,599 km

Engine
2493 cc


Fuel Type
Hybrid

Transmission
Auto

Wheels
-

VIN
-

Interior
-

Safety


Based on 2023 UCSR rating for 11-17 models

Reg No.
PYC110

Ext Colour
Black

History
-

Seats
-

CO2 Emissions
★★★★☆
121 grams/km

Energy Economy
★★★★☆☆
Annual fuel cost of \$2,040
5.2L per 100km

Cost per year is an estimate based on petrol price of \$2.80 per litre and an average distance of 14000 km. Emissions and Energy Economy figures standardised to 3P WLTP.

Stock ID: 2551990



A2Z Cars | Phone 0800 A2Z CAR | Email paulmadan@gmail.com
33 Neilson Street, Onehunga, Auckland 1061, New Zealand
www.a2zcars.co.nz

