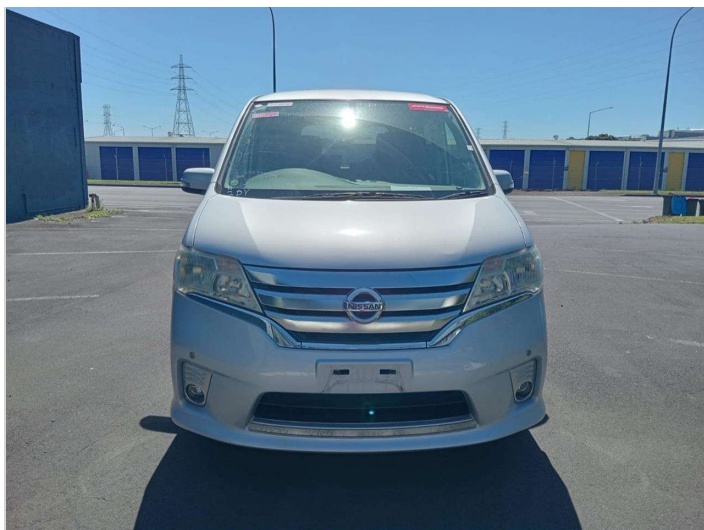


2012 Nissan Serena Hybrid



Purchase Price **\$9,499**

Includes GST
Excludes on-road costs of \$569.25

Finance may be available on this vehicle. Ask one of our friendly staff for more information.



Gain peace of mind with Mechanical Breakdown Insurance. **Ask us how.**



Top features

None Listed

Body Style
Van

Odometer
100,400 km

Engine
1990 cc

Fuel Type
Hybrid


Transmission
Auto

Wheels
-

VIN
7AT0DH3FX24080647

Interior
-

Safety



Based on 2024 VSRR rating

Reg No.
-

Ext Colour
silver

History
-

Seats
-

CO2 Emissions
★★★★☆
183 grams/km


Energy Economy
★★★☆☆
Annual fuel cost of \$2,980
7.6L per 100km

Cost per year is an estimate based on petrol price of \$2.80 per litre and an average distance of 14000 km. Emissions and Energy Economy figures standardised to 3P WLTP.

Stock ID: 2552088



A2Z Cars | Phone 0800 A2Z CAR | Email paulmadan@gmail.com
33 Neilson Street, Onehunga, Auckland 1061, New Zealand
www.a2zcars.co.nz



★★★★★
4.52 | 968 reviews