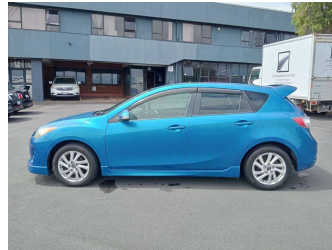


2012 Mazda Axela



Purchase Price **\$11,499**

Includes GST
Excludes on-road costs of \$569.25

Finance may be available on this vehicle. Ask one of our friendly staff for more information.



Gain peace of mind with Mechanical Breakdown Insurance. **Ask us how.**



Top features

None Listed

Body Style
Hatchback

Odometer
59,142 km

Engine
1998 cc

Fuel Type
Petrol

Transmission
Auto

Wheels
-

VIN
7AT0C13JX24109019

Interior
-

Safety



Based on 2024 UCSR rating for 09-13 models

Reg No.

-

Ext Colour
Blue

History

-

Seats

-

CO2 Emissions
★★★★☆
166 grams/km

Energy Economy
★★★☆☆

Annual fuel cost of \$2,700
6.9L per 100km

Cost per year is an estimate based on petrol price of \$2.80 per litre and an average distance of 14000 km. Emissions and Energy Economy figures standardised to 3P WLTP.

Stock ID: 2552160



A2Z Cars | Phone 0800 A2Z CAR | Email paulmadan@gmail.com
33 Neilson Street, Onehunga, Auckland 1061, New Zealand
www.a2zcars.co.nz

