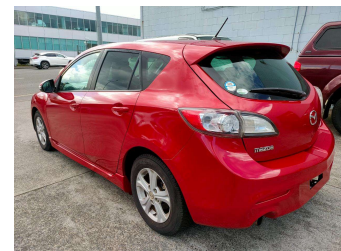
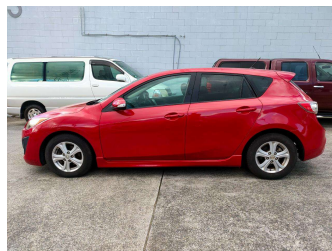



2009 Mazda Axela



Purchase Price **\$7,999**

Includes GST
Excludes on-road costs of \$569.25

Finance may be available on this vehicle. Ask one of our friendly staff for more information.



Gain peace of mind with Mechanical Breakdown Insurance. **Ask us how.**



Top features

None Listed

Body Style
Hatchback

Odometer
121,849 km

Engine
1998 cc


Fuel Type
Petrol

Transmission
Auto

Wheels
-

VIN
7AT0C13JX23106161

Interior
-

Safety

Based on 2023 UCSR rating for 09-13 models

Reg No.
-

Ext Colour
Red

History
-

Seats
-

CO2 Emissions
★★★★☆
183 grams/km

Energy Economy
★★★☆☆
Annual fuel cost of \$2,980
7.6L per 100km

Cost per year is an estimate based on petrol price of \$2.80 per litre and an average distance of 14000 km. Emissions and Energy Economy figures standardised to 3P WLTP.

Stock ID: 2551242



A2Z Cars | Phone 0800 A2Z CAR | Email paulmadan@gmail.com
33 Neilson Street, Onehunga, Auckland 1061, New Zealand
www.a2zcars.co.nz

