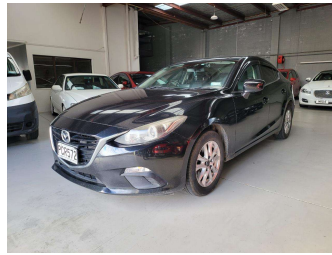


# 2015 Mazda Axela



Purchase Price

**\$10,699**

Includes GST  
Excludes on-road costs of \$287.5

Finance may be available on this vehicle. Ask one of our friendly staff for more information.



Gain peace of mind with Mechanical Breakdown Insurance. **Ask us how.**



## Top features

None Listed

Body Style

**Hatchback**

Odometer

**126,900 km**

Engine

**1990 cc**

Fuel Type

**Hybrid**

Transmission

**Auto**

Wheels

-

VIN

-

Interior

-

Safety



Based on 2023 UCSR rating for 13-19 models

Reg No.

**PCR572**

Ext Colour

**Black**

History

-

Seats

-

CO2 Emissions

★★★★☆

**146 grams/km**

Energy Economy

★★★★☆☆

**Annual fuel cost of \$2,390**

**6.1L per 100km**

Cost per year is an estimate based on petrol price of \$2.80 per litre and an average distance of 14000 km. Emissions and Energy Economy figures standardised to 3P WLTP.

**Stock ID: 2551872**



A2Z Cars | Phone 0800 A2Z CAR | Email paulmadan@gmail.com  
33 Neilson Street, Onehunga, Auckland 1061, New Zealand  
www.a2zcars.co.nz

