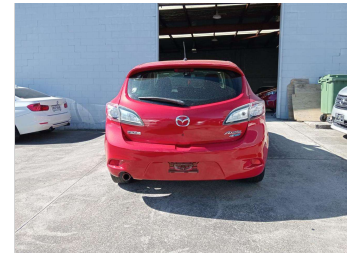
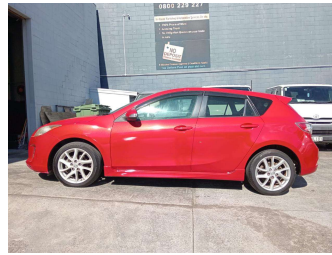



# 2011 Mazda Axela



**Purchase Price** **\$8,995**

Includes GST  
Excludes on-road costs of \$569.25

Finance may be available on this vehicle. Ask one of our friendly staff for more information.



Gain peace of mind with Mechanical Breakdown Insurance. **Ask us how.**



**Top features**

None Listed

Body Style  
**Hatchback**

Odometer  
**133,899 km**

Engine  
**1998 cc**

Fuel Type  
**Petrol**


Transmission  
**Auto**

Wheels  
-

VIN  
**7AT0C13JX24101323**

Interior  
-

Safety



Based on 2023 UCSR rating for 09-13 models

Reg No.  
-

Ext Colour  
**Red**

History  
-

Seats  
-

CO2 Emissions  
**★★★★☆**  
**169 grams/km**

Energy Economy  
**★★☆☆☆**  
**Annual fuel cost of \$2,740**  
**7L per 100km**

Cost per year is an estimate based on petrol price of \$2.80 per litre and an average distance of 14000 km. Emissions and Energy Economy figures standardised to 3P WLTP.

**Stock ID: 2551792**



A2Z Cars | Phone 0800 A2Z CAR | Email paulmadan@gmail.com  
33 Neilson Street, Onehunga, Auckland 1061, New Zealand  
www.a2zcars.co.nz

